

KNAUF



PRODUCT CATALOGUE

Disclaimer

Products manufactured and systems designed by Knauf are produced in accordance with the Building Code of Australia and relevant Australian Standards. Information in this document is to be used as a guide only and is subject to project approval as many aspects of construction are not comprehensively covered. It is also the responsibility of the project to determine if Knauf's products and systems are suitable for the intended application. Knauf Plasterboard Pty Ltd will not be held responsible for any claims resulting from the installation of its products or other associated products not in accordance with the recommendations of the manufacturer's technical literature or relevant Australian Standards.

Knauf technical information is regularly updated. To ensure this document is current with the latest information, visit knaufplasterboard.com.au or knaufmetal.com.au or please contact Knauf's Customer Service Centre on **1300 724 505 (Knauf Plasterboard)** or **1300 725 675 (Knauf Metal)**.

Warranty

Knauf Plasterboard products are guaranteed by a 10 Year Warranty and Knauf Metal products are guaranteed by a 15 Year Warranty. Visit knaufplasterboard.com.au or knaufmetal.com.au for details.

Version 5

February 2016

Contents



Accurra Metal Range	2
Plasterboard	6
PERMAROCK®	9
Systems	14
Acoustic Wall and Ceiling Linings	18
Cornice	23
Compounds	24
Accessories	28

Product Properties



Fire Resistant



Impact Resistant



Water Resistant



X-Ray Resistant



Sound Resistant



Sound Absorbing



Air Purifying



Interior Design



Mould Resistant



Certified Products

A range of Knauf products are certified by Global GreenTag to GreenRate Level A, a product certification scheme recognised by the GBCA. Level A recognition will achieve 100% of the Green Star points within the relevant materials categories. Any product which features the tag is certified.



ABOUT KNAUF

Knauf Australia is a manufacturer and major supplier of building materials to the light weight construction industry in Australia.

With plants in Matraville (Sydney) and Altona (Melbourne), manufacturing plasterboard and compounds; and metal profile lines in Beenleigh (Brisbane); Knauf supplies high quality sustainable building materials through a national franchise PlastaMasta network.

Our diverse product ranges include plasterboard and steel framing systems for walls and ceilings; decorative, acoustic and air-cleaning wall & ceiling linings; flooring systems and facade linings; and plasters for internal and external applications.

Knauf's innovative lightweight construction systems are designed to provide smart, active technology solutions for fire, water, sound and impact resistance as well as space-giving, air-cleaning, acoustic and aesthetic design solutions for all commercial and residential projects.

Backed up by the most capable engineering service with access to sophisticated design and specification tools, Knauf provides end to end project support, working collaboratively with partners throughout the construction process to be part of finding the right solution.

As you begin to design and create the spaces we live in - no matter how complex a vision you may have - creating the materials and providing the solutions to translate your vision into reality, is a passion at Knauf.

PlastaMasta

**To find the nearest PlastaMasta store
visit knaufplasterboard.com.au**

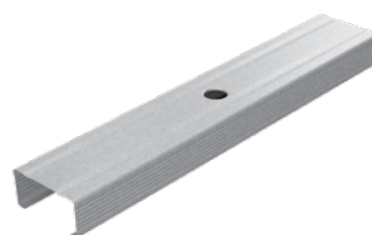
Metal

ACCURRA METAL RANGE

Wall Framing Systems - AccuStud, AccuTrack, AccuTrack DH, AccuTrack Flex, AccuTrack Nogging

Accurra Steel Wall Framing Systems are robust, versatile and durable products suitable for use in all internal and external framing applications. The wide variety of system components- from AccuStud and AccuTrack to AccuTrack DH, AccuTrack Nogging and AccuTrack Flex- are available in multiple widths, lengths and gauges, ensuring there is an Accurra Steel Wall system suitable for all framing applications.

Width (mm)	BMT (mm)	ACCUSTUD								ACCUTRACK	ACCUTRACK DH
										Length (mm)	Length (mm)
		2400	2700	3000	3600	4200	4800	6000	7200	3000	3000
51	0.5	●	●	●	●					●	
	0.55										
	0.7									X	X
	0.75			X	X	X					
64	0.5	●	●	●	●	●	●	X		●	
	0.55										●
	0.7									●	●
	0.75	X	●	●	●	●	●	●			
76	1.15									●	●
	0.5									●	
	0.55	●	●	●	●	●	●	X		●	●
	0.7									●	●
92	1.15	X	●	●	●	●	●	●		●	●
	0.5									●	
	0.55	●	●	●	●	●	●	●	X		●
	0.7									●	●
150	0.75	●	●	●	●	●	●	●	X	●	□
	1.15		●	●	●	●	●	●	X	●	●



□ AccuTrack DH Slotted also available in this specification

X Lead Times may apply

Width (mm)	BMT (mm)	ACCUTRACK NOGGING			
		Length (mm)	Spacing (mm)		
			300	450	600
64	0.70	3670	X	●	●
76			X	●	●
92			X	●	●
150			X	●	●

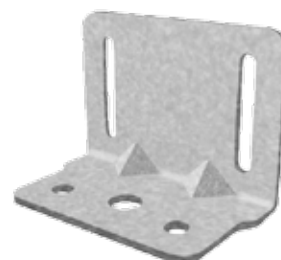
Heavy Duty Wall System - AccuJamb

AccuJamb is a heavy duty external wall system. AccuJamb products have been specially engineered to provide a more efficient, versatile and cost effective design solution to traditional external framing construction. AccuJamb External Wall Framing System is a strong, light-weight solution.

AccuJamb's strength comes from its simple yet solid structure comprising AccuJamb Studs with standard AccuTrack and specialty AccuJamb Lintel and Connector Brackets.

ACCJAMB							
Width (mm)	BMT (mm)	Leg Height (mm)	Length (mm)				
			2700	3000	3600	4200	4800
92	155	63	•	•	•	•	X
AccuJamb Connector Bracket							

X Lead Times may apply



Quiet Wall System - Acoustic Stud **new and improved**

The AccustiStud quiet wall system enhances the acoustic comfort of an area by isolating noise transfer between rooms, whilst maintaining a minimal wall footprint and increasing usable space. Using standard plasterboard installation methods, the AccustiStud system is easy to install and provides an excellent noise reduction solution by effectively reducing airborne noise transfer.

The AccustiStud quiet wall system is comprised of the specially engineered AccustiStud, with friction fit AccuTrack and AccuTrack DH along with an acoustic plasterboard lining such as SoundShield.

Width (mm)	BMT (mm)	ACCUSTISTUD							
		Length (mm)							
		2400	2700	3000	3600	4200	4800	6000	7200
92	0.55	X	o	o	o	o	X	X	X

X Lead Times may apply



Concealed Ceiling System - AccuCeil

The Knauf Accurra concealed ceiling systems consist of robust, lightweight products suitable for use in both direct fix and fully suspended concealed ceiling systems. Accurra Metal concealed ceiling systems can be used for both fire rated and non-fire rated applications, and have been designed to meet all relevant Australian Standards as specified by the BCA.

The range includes AccuCeil Furring Channel, Top Cross Rail and Battens with AccuHat Top Hats and associated AccuCeil fixings and AccuClip clips. The wide variety of products available ensures there is an AccuCeil concealed ceiling system configuration suitable for all spanning, fire rated and acoustic and design requirements.

Width (mm)	Length (mm)							Width (mm)	Leg Height (mm)	BMT (mm)	Length (mm)		
	2400	2700	3000	3600	4800	6000	6100				3600	6000	7200
ACCUCEIL FURRING CHANNEL								ACCUHAT					
18	○	○	○	○	○	○		50	15	1.15	●	●	
28	●	●	●	●	●	●			25	1.15		●	
ACCUCEIL TOP CROSS RAIL									35	0.75		●	●
25				○	○	○				1.15	●	●	●
30					●			75	50	1.15		●	●
38					●				35	1.15	●	●	●
ACCUCEIL FURRING CHANNEL TRACK								120		1.15		●	●
18			●					○ AccuCeil FC Curve and AccuCeil TCR Curve are also available in this specification					
28			●										
35			X										
ACCUCEIL DOMESTIC BATTEN								X Lead Times may apply					
16					●	●							
ACCUCEIL CYCLONIC BATTEN													
22							●						
35					X	X							



Grid Ceiling Systems - AMF Ventatec

Knauf AMF Ventatec is a practical grid ceiling system engineered for fast assembly on site.

Through the configuration of cross tees and main tees, AMF Ventatec enables a sturdy, attractive grid ceiling to be constructed with ease. For more information visit www.amfceilings.com.au.

VENTATEC T-MAIN RUNNER				VENTATEC T-CROSS TEE				VENTATEC WALL ANGLE			
Height (mm)	Length (mm)			Height (mm)	Length (mm)			Height (mm)	Length (mm)		
	600	1200	3600		600	1200	3600		600	1200	3600
38			●	33	●			19			●
				38		●	●	24			●



Beads and Finishing Sections - AccuFix

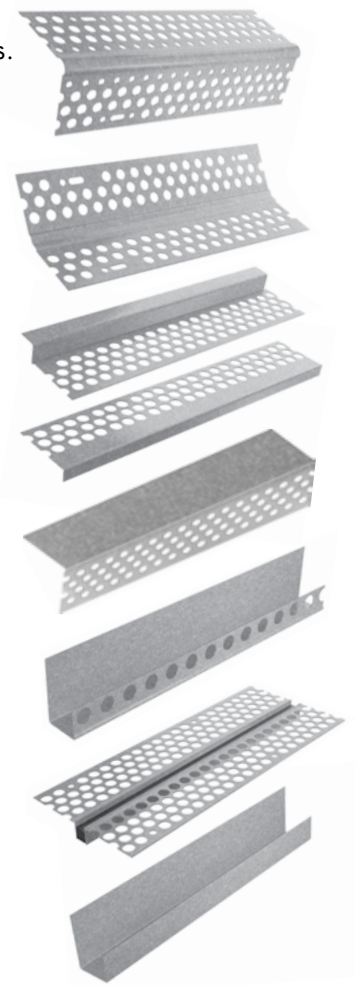
AccuFix is a range of finishing sections which enable a clean and defined edge whilst also protecting corners from impacts, allowing builders to deliver a strong, beautiful finish that lasts. AccuFix finishing sections are the perfect complement to the Knauf Accurra metal and plasterboard range.

AccuFix bead and angle varieties are available for most common applications. Products have been designed to meet a variety of specified requirements and applications such as rendered corners, archways, shadowlines and expansion joints.

ACCUFIX EXTERNAL ANGLE					ACCUFIX RENDER BEADS					ACCUFIX BACKING ANGLE						
Corner (°)	Length (mm)				Radius (mm)	Length (mm)				Width (mm)	BMT (mm)	Length (mm)				
	2400	2700	3000	3600		2400	2700	2800	3000			2400	2700	3000	3600	
90	●	●	●	●	1.5	●	●		●	25	0.70			●	●	
135	●	●	●	X	2.5	●		●		28	0.3	●				
ACCUFIX INTERNAL ANGLE					4.5	●		●		35	0.70			●	●	
90	●	●	●	●	ACCUFIX PLASTER STOPPING BEAD					40	0.70			●	●	
135	●	●	●	X	Size (mm)	Length (mm)				50	0.70			●	●	
ACCUFIX STOPPING ANGLE						2400	2700	3000	3600		1.15			●		
Size (mm)	Length (mm)				6	●				75	1.15			●		
	2400	2700	3000	3600												
					10	●	●	●	●	100	1.15			●		
10			○		13	X	X	●	X	ACCUFIX REVEAL BEAD						
13			●		16			●		25				X	X	
16			●		ACCUFIX PLASTER CASING BEAD					50				X	X	
20			X		6				X	75				X	X	
ACCUFIX ARCH ANGLE					10	X	X	●	X	100				X	X	
30	X		●		13	X	X	●	X	ACCUFIX EXPANSION JOINT						
					16			●						●		

° AccuFix Shadowline Stopping Angle is also available in this specification

X Lead Times may apply



AccuClip and Accessories

Knauf provides a wide range of accessories to complement our steel wall and ceiling systems including PVC bead finishing sections, Access panels and Clips.

AccuClip clips have been specially engineered for optimal performance with Accurra metal systems. The range includes standard clips, joiners and brackets as well as resilient clips for acoustic performance.

For the full AccuClip and Accessories range, please refer to our website.



Plasterboard

SHIELD RANGE

MastaShield

MastaShield is a standard plasterboard for internal wall linings and ceilings. MastaShield suits a wide range of standard applications.

- Light weight lining
- Economical solution



Thickness (mm)	Width (mm)	Length (mm)	Weight* (kg/m²)
10	1200	2400 2700 3000 3600 4200 4800 6000	6.6
	1350	2700^ 3000 3600 4200 4800 6000	
13	1200	2400 2700 3000 3600 4200^ 4800 6000	8.4
	1350	3000 3600 4800	

SpanShield

SpanShield is a 10mm reinforced plasterboard for ceilings. It is designed to span internal ceiling joists or furring channels up to 600mm without sagging.

- Sag resistant ceiling solution
- Light weight ceiling



Thickness (mm)	Width (mm)	Length (mm)	Weight* (kg/m²)
10	1200	3000 3600 4200 4800 6000	6.8
	1350	3600 4800^ 6000	



WaterShield

WaterShield is a water resistant plasterboard suitable for use in internal wet areas and as a substrate for tiles.

- Moisture resistant solution
- Protects framing members against water damage



Thickness (mm)	Width (mm)	Length (mm)	Weight* (kg/m²)
10	1200	2400 2700 3000 3600 4200	7.5
	1350	3600 4800	
13	1200	2700 3000	9.4



SoundShield

SoundShield is a plasterboard with a high density core providing excellent sound insulation for residential and commercial applications. Used in wall and ceiling systems, SoundShield provides superior levels of sound resistance.

- Superior sound resistant solution
- Reduces noise transfer between rooms



Thickness (mm)	Width (mm)	Length (mm)	Weight* (kg/m²)
13	1200	3000	12.4



CurveShield

CurveShield is a thin flexible plasterboard that can be used to create curved walls and ceilings.

► Design solution for concave and convex surfaces



Thickness (mm)	Width (mm)	Length (mm)	Weight* (kg/m ²)
6.5	1200	3600	4.6



FireShield

FireShield is a fire resistant plasterboard for internal lining applications where a Fire Resistance Level (FRL) is required.

► Fire resistant solution

► Good sound insulation properties



Thickness (mm)	Width (mm)	Length (mm)	Weight* (kg/m ²)
13	1200	2700 3000 3600	10.5
	1350	3600 [^]	
16	1200	2400 [^] 2700 [^] 3000 3600	12.6
	1350	3600 [^]	



ShaftLiner

ShaftLiner is a 25mm fire resistant plasterboard designed for shafts and ducts in multi-level constructions. ShaftLiner is also used in the InterHome System.

► Fire resistant solution

Thickness (mm)	Width (mm)	Length (mm)	Weight* (kg/m ²)
25	600	3000 3600	20.0



Special sizes and other edge types available, minimum order quantity and lead times apply. *Weights indicated are nominal [^]Not available in all locations

Plasterboard

SMART, ACTIVE TECHNOLOGY



TruRock

TruRock is the lining of choice for high performance commercial construction.

TruRock incorporates impact, water and fire resistance as well as sound insulating properties. Durable and easy to handle TruRock is economical and ideal for multi-purpose applications.

➤ Perfect all-round solution

➤ 4 in 1 plasterboard

➤ Impact, fire and water resistant with good sound insulating properties



Thickness (mm)	Width (mm)	Length (mm)	Weight* (kg/m ²)
13	1200	3000 3600	12.3
	1350	4200	
16	1200	3000	14.8



TruRock HD

TruRock HD has the added benefits of mould resistance and enhanced impact performance.

In addition to its heavy duty paper, TruRock HD has a continuous fibreglass mesh embedded in the high density core limiting damage even under large impact forces.

TruRock HD provides premium impact protection and mould resistance.

➤ Premium all-round solution

➤ Mould resistance and high performance impact resistance

➤ Impact, fire and water resistant with good sound insulating properties



Thickness (mm)	Width (mm)	Length (mm)	Weight* (kg/m ²)
13	1200	3000 3600	12.3



Special sizes and other edge types available, minimum order quantity and lead times apply. *Weights indicated are nominal

PERMAROCK®

PERMAROCK CEMENT BOARD SYSTEM



PERMAROCK®

Cement Board Indoor

PERMAROCK® is a solid, engineered wall and ceiling lining made from inorganic aggregated cement embedded with coated glass fibre mesh that is 100% water resistant making it an ideal tile substrate.

- ▶ Limited expansion or contraction when exposed to moisture
- ▶ High dimensional stability when exposed to temperature and humidity variations
- ▶ 100% water resistant, no swelling, disintegration or damage

Thickness (mm)	Width (mm)	Length (mm)	Weight* kg/m²
13	1200	3000	15.0



PERMAROCK®

Cement Board Outdoor

PERMAROCK® Cement Board Outdoor is made of Portland cement and aggregated core, with coated glass fibre mesh embedded in back and front surfaces. Ends are square cut and both edges are reinforced and finished smoothly.

- ▶ Extreme weather resistance



Thickness (mm)	Width (mm)	Length (mm)	Weight* kg/m²
13	1200	3000	16.0

PERMAROCK Cement Board Indoor Range

Description
PERMAROCK® Indoor 13 x 1200 x 3000mm
PERMAROCK® Joint Adhesive (PU) 310 mL Cartridge
BindEx High Absorption Primer (Aufbrennsperre) 15 kg bucket
PERMAROCK® Joint Filler & Skim Coating - White 20 kg bag
PERMAROCK® Joint Filler - Grey 20 kg bag
PERMAROCK® Reinforcing Mesh 1m x 50m
PERMAROCK® Tape 100mm x 50m
PERMAROCK® Maxi Screw Needle Point SN 25mm x 1000
PERMAROCK® Maxi Screw Needle Point SN 39mm x 500
PERMAROCK® Maxi Screw Drill Point SB 25mm x 250

Waterproof Membrane & Accessories

Description
BindEx Waterproof Membrane 5 kg bucket
BindEx Flashing Tape 120mm x 10m
BindEx Corner Flasing Tape
BindEx Waterproof Butyl Drain Collar
BindEx Waterproofing Sheet
BindEx Flexible Pipe Collar x 2

PERMAROCK Cement Board Outdoor Range

Description
PERMAROCK® Outdoor 13 x 1200 x 3000mm
TYVEK® Water resistant barrier
PERMAROCK® Exterior Reinforcing Tape 50m
PERMAROCK® Exterior Basecoat - White 25 kg bag
PERMAROCK® Joint Filler - Grey 20 kg bag
PERMAROCK® Reinforcing Mesh 1m x 50m
PERMAROCK® Tape 100mm x 50m
PERMAROCK® Maxi Screw Needle Point SN 25mm x 1000
PERMAROCK® Maxi Screw Needle Point SN 39mm x 500
PERMAROCK® Maxi Screw Drill Point SB 25mm x 250
PERMAROCK® Maxi Screw Drill Point SB 39mm x 250
PERMAROCK® Maxi Screw Needle Point SN 55mm x 250

*Weights indicated are nominal

PERMAROCK®

Maxi Screw

PERMAROCK® Maxi Screws have been developed for easy fixing of PERMAROCK® Cement Board Indoor and Outdoor onto timber and steel frames. They are countersinking and available in both needle point and drill point.



Quantity per box	Type	Description	Lengths (mm)
1000	Loose	Needle point screws SN 25	25mm
500	Loose	Needle point screws SN 39	39mm
250	Loose	Needle point screws SN 55	55mm
250	Loose	Drill point screws SB 25	25mm
250	Loose	Drill point screws SB 39	39mm

BindEx High Absorption Primer

BindEx High Absorption Primer is a ready-to-use synthetic emulsion for priming PERMAROCK® Cement Board Indoor.

- Easy and fast application
- Solvent free and alkali resistant

15 kg bucket



*Weights indicated are nominal

PERMAROCK CEMENT BOARD SYSTEM

PERMAROCK®

Reinforcing Mesh

PERMAROCK® Reinforcing Mesh is a glass fibre mesh used to reinforce PERMAROCK® Skim Coat - White and PERMAROCK Basecoat - White.

Width: 1m

Length: 50m



PERMAROCK®

100mm Tape

PERMAROCK® 100mm Tape is made of glass fibre with an alkali resistant coating. PERMAROCK® 100mm Tape is used to reinforce joints in ceilings and exterior wall. It is embedded into PERMAROCK® Joint Filler - Grey.

Width: 100m

Length: 50m



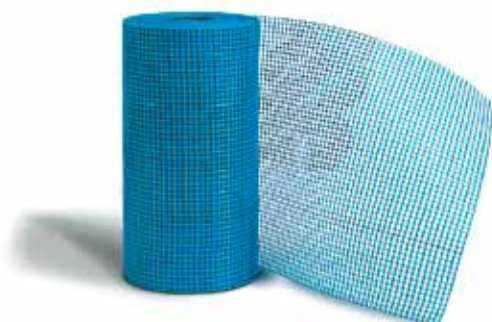
PERMAROCK®

Exterior Reinforcing Tape

PERMAROCK® Exterior Reinforcing Tape is used for joint and corner reinforcement and for reinforcement of openings on PERMAROCK® Cement Board Outdoor when a paint finish is to be applied.

Width: 200mm

Length: 50m



TYVEK® Stucco Wrap

Tyvek® Water Resistant Barrier is a special climate membrane made of very fine fibres with a coarse crepe structure. This climatic membrane is a water barrier from the outside to the inside and allows vapour diffusion from the inside to the outside.

Width: 1.5m

Length: 75m



*Weights indicated are nominal

PERMAROCK®

Joint Adhesive (PU)

PERMAROCK® Joint Adhesive (PU) is used to glue PERMAROCK® sheet edges together on internal walls. The adhesive is applied to the sheet edges prior to fixing adjoining sheets.

- Easy application
- Strong bond
- Durable

310 ml cartridge



PERMAROCK®

Skim Coat - White

PERMAROCK® Skim Coat - White is a cement based compound for skim coating PERMAROCK® Cement Board Indoor in non-tiled areas.

- Excellent surface finish
- High strength
- Hand or machine applied

20 kg bag



PERMAROCK®

Joint Filler - Grey

PERMAROCK® Joint Filler - Grey is a cement based compound for setting PERMAROCK® 100mm Tape on ceilings and exterior wall.

- Easy application
- High strength joint
- Durable

20 kg bag



PERMAROCK®

Exterior Basecoat - White

PERMAROCK® Exterior Basecoat - White is a portland cement bound filling material for full-surface skim coating to a thickness of 6mm on PERMAROCK® Cement Board Outdoor.

- Excellent surface finish
- High strength
- Hand or machine applied

25 kg bag



PERMAROCK INDOOR WATERPROOFING ACCESSORIES

BindEx Waterproof Membrane

BindEx Waterproof Membrane is a liquid applied waterproof membrane comprising synthetic latex and mineral fillers.

- Complies with AS4858:2004 Wet Area Membranes
- Knauf warranty applies when installed correctly as a system
- Easy to work with and solvent free

5 kg bucket



BindEx Waterproof Flashing Tape

BindEx Waterproof Flashing Tape is a durable and highly flexible corner flashing tape. The 120mm polyester wide fabric is integrated with a central 70mm wide elastic strip.

- Highly flexible expansion zone, laminated with non-woven fleece on both sides
- Ideal for corners and to bridge gaps and cracks
- Optimum adhesive bond with BindEx Waterproof Membrane

Width: 120mm

Length: 10m



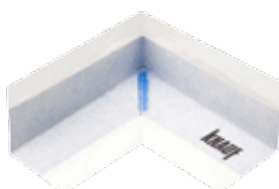
BindEx Waterproof Corner Flashing Tape

BindEx Waterproof Corner Flashing Tape is a 3-way flexible flashing tape to protect corners of a wet area room. Available for internal and external corners.

- Highly tear-resistant, isolating and fully compatible with silicone
- Laminated with non-woven fleece on both sides for easy, reliable application
- Optimum adhesive bond with BindEx Waterproof Membrane

1 piece per pack

Internal corners or External corners



BindEx Waterproof Pipe Collar

BindEx Waterproof Pipe Collar is a flat flexible pipe collar. It creates a permanent watertight seal around pipes.

- Highly flexible expansion zone, laminated with non-woven fleece on both sides
- Optimum adhesive bond with BindEx Waterproof Membrane
- Fully compatible with silicone

1 piece per pack

100x100mm or

150 x 150mm.



Systems

GIB X-BLOCK



GIB X-Block®

GIB X-Block® is a unique lead free plasterboard designed to provide X-ray radiation protection in X-ray diagnostic rooms within medical facilities and dental clinics. It must be installed in conjunction with the Knauf X-ray shielding system using GIB X-Block® Jointing Compound.

- Lead-free X-ray shielding solution
- Easy to use compared with traditional installation procedures

Thickness (mm)	Width (mm)	Length (mm)	Weight* (kg/m ²)
12.5	1200	3000	15.3

*Weights indicated are nominal

GIB X-Block® Jointing Compound

GIB X-Block® Jointing Compound has been specifically formulated to give lead equivalent joints on walls and ceilings when using GIB X-Block® plasterboard. An air drying powder compound, it must be used for the first and second coats of X-Block systems, completely filling the recess.

- X-ray shielding solution
- Lead free
- Easy to use compared with traditional installation procedures

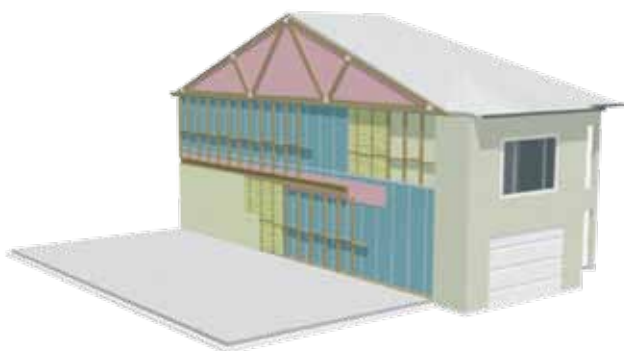
25 kg bag



INTERHOME

InterHome

InterHome is a separating wall system suitable for adjoining residential dwellings such as duplexes or townhouses. InterHome has been designed to satisfy the fire safety and sound insulation requirements of the Building Code of Australia (BCA) for separating walls.

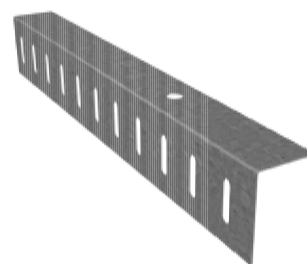


Slotted Angle new

The Knauf Slotted Angle is used to secure H-Studs under a soffit when the InterHome system is installed between slabs. It allows slab deflection and easy installation of ShaftLiner panels.

► InterHome for high rise apartments

► Easy installation of H-Studs and ShaftLiner



InterHome H-Stud

The InterHome H-Stud must be used in the InterHome System. It has an innovative design that can support 1 layer of 25mm ShaftLiner in the central fire barrier of InterHome Systems.

► Innovative flange design

► Cost effective solution



Quantity per pallet (studs)	Length per stud (m)	BMT or gauge (mm)
100	3.0, 3.6	0.55 BMT Z275 galvanised steel

InterHome Aluminium Clip

The InterHome Aluminium Clip forms an integral part of the InterHome System. Installed to support the central fire barrier, it must be used to maintain the fire performance of the system.



Quantity per bag (clips)	Quantity per box (bags)	Thickness (mm)
150	6	1.6

ULTRAHOME



OPAL

UltraHome is a plasterboard and compounds system designed to offer the ultimate in performance for the home. OPAL plasterboard incorporates impact resistance and superior sound insulation properties, providing durable and low maintenance surfaces, as well as quiet living spaces like no other. OPAL offers a smooth premium finish for stylish, graceful walls and ceilings.

To achieve the full benefits of Level+ Technology, the UltraHome system must comprise OPAL plasterboard and MastaTape Universal Compound.

- High performance plasterboard and compounds system, for walls and ceilings
- Smooth premium finish that creates a uniform surface with sound insulation and impact resistance
- Perfect board to make your house a home



Thickness (mm)	Width (mm)	Length (mm)	Weight* (kg/m ²)
10	1200	4800, 6000	8.4
	1350		



MastaTape Universal

Rigorously tested for the UltraHome system, MastaTape Universal Compound incorporates Level+ Technology. This enables a strong smooth finish on OPAL plasterboard wall and ceilings, with the benefits of close texture and absorption between the compound joint and plasterboard surface, to achieve the best possible Level 4 Finish.

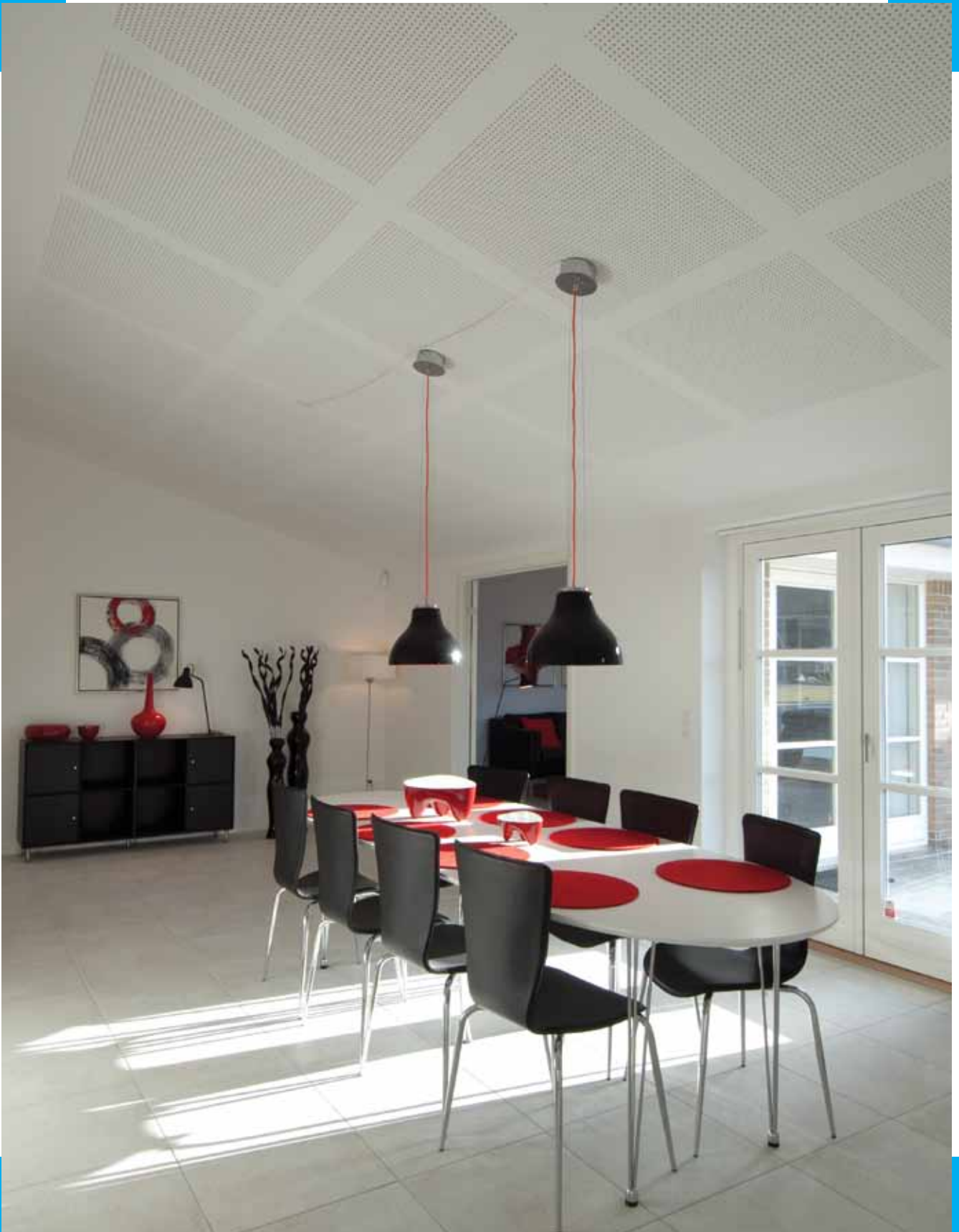
- Fast application
- Strong tape bond
- Level+ Technology for premium Finish

16 kg bucket



*Weights indicated are nominal

CREATE SMART SPACES



Acoustic Wall and Ceiling Linings

DESIGNLINE RANGE



Stratopanel

previously known as **CLENEO**

Stratopanel (previously CLENEO) is a unique acoustic wall and ceiling lining incorporating the original CLENEO Technology and offering a seamless monolithic look with continuous perforation. Stratopanel must be installed using Uniflott Jointing Compound or as an alternative is available with a compound free edge type (Linear).

- Improves the overall quality of indoor air
- Attractive seamless appearance with continuous perforations in 4 standard patterns
- Excellent acoustic performance

Perforation pattern	Thickness (mm)	Size - Width x Length (mm)	Weight* (kg/m ²)	Edge Type	Perforation area (%)	Absorption (α _w /NRC)
8/18 R	12.5	1188 x 1998	9.9	FF / Linear [^]	15.5	0.60-0.70
8/18 Q		1188 x 1998	9.4	FF	19.8	0.60-0.75
12/20/66 R		1188 x 1980	9.4	FF / Linear [^]	19.6	0.60-0.75
8/15/20 R		1188 x 1875	9.9	FF	9.9	0.45-0.50



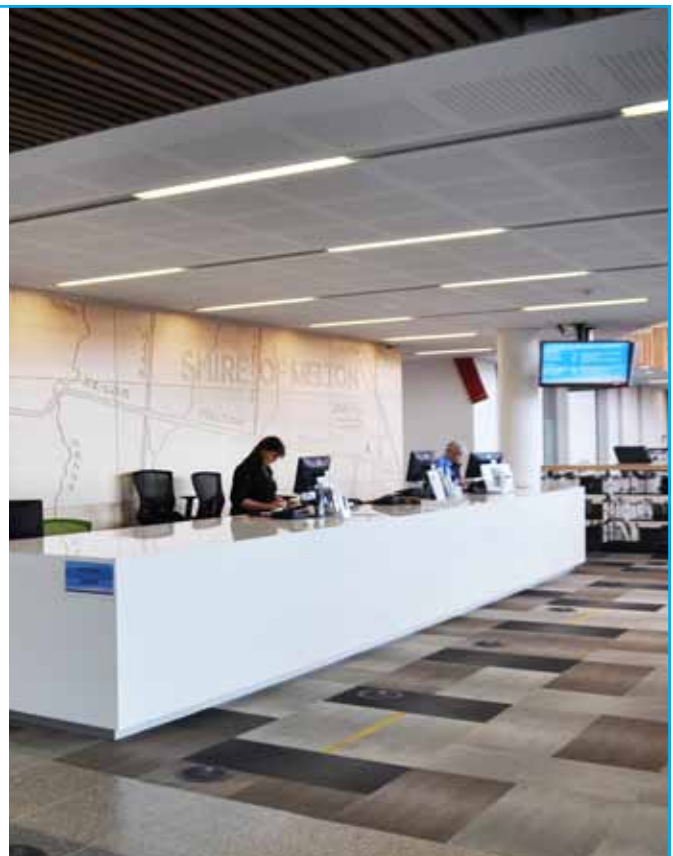
Designpanel

Designpanel combines great design with air cleaning CLENEO Technology and acoustic comfort by providing even sound absorption across the whole frequency range and thereby creating enhanced audibility and a high quality sound experience. Ideally suited in large open areas on both ceilings and walls and also perfect for high residential ceilings.

- Broadband sound absorption and diffusion
- High quality design with precision perforations in a range of 4 standard design patterns
- 4 tapered edges for easy installation



Pattern	Thickness (mm)	Width (mm)	Length (mm)	Weight* (kg/m ²)	Edge Type	Perforation area (%)	Absorption** (α _w /NRC)
G2F	12.5	1200	2400	8.9	4 x Tapered edge	8.6	0.50-0.65
Q2F		1200		8.8		11.6	0.50-0.70
M2F		1200		8.9		8.6	0.50-0.60
T3L4 [^]		900		8.8		13.3	0.45-0.55



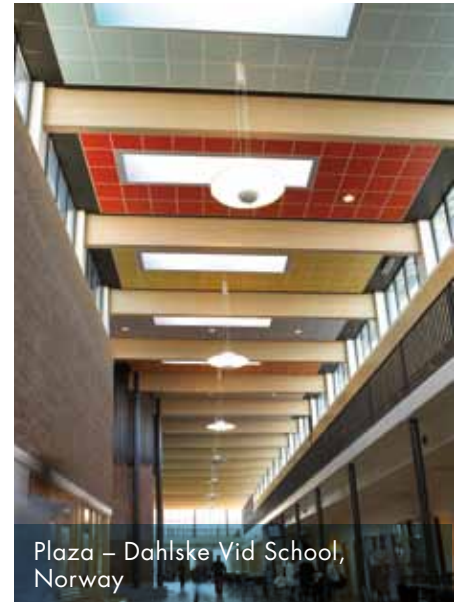
* Weights indicated are nominal [^]Non-stock item-lead times and minimum order quantities may apply
All perforated plasterboard now with Cleaneo air cleaning technology that reduces both smells and airborne pollutants such as VOCs.



Visona – Nouvelles Cliniques Nantaises, France



Contrapanel – Levallois Perret Sportscentre, France



Plaza – Dahlske Vid School, Norway

Turn inspiration into reality

Be inspired by more acoustic products also available in the DesignLine range as special orders*



Contur – Music House Aalborg, Denmark



Belgravia – Son Water Hotel, Norway



CREANOVApanel – Music House Aalborg, Denmark

* Please note minimum order quantities apply and delivery time is a minimum of 12 weeks

Knauf Group in Australia

The Knauf Group has over many decades transitioned from a pure family-run company to a globally operating family of businesses. Knauf's worldwide product range spans drywall linings, insulation, acoustic ceiling systems, exterior facades, plasters and flooring systems.

Alongside Knauf in Australia are Knauf owned businesses Knauf Insulation and AMF Ceilings. Knauf Insulation supplies a superior, wide range of glass and rock mineral wool insulation products; and AMF are one of the most innovative high performance mineral fibre and wood wool ceiling manufacturers in the world.



AMF Thermatex

AMF Thermatex ceiling tiles are made from new generation bio-soluble mineral wool, clay and starch and are therefore based on natural raw materials and offer excellent acoustic performance.

Available in a wide range of face patterns, edge details and acoustic performance, AMF tiles are non-combustible and offers special products for clean room, hygiene and high humidity requirements.

The new AMF Medical range offers a hygiene treatment for resistance to fungi and bacteria, with paint sealed edges and surfaces that are washable and scrubbable. Available to order for Acoustic, Alpha & Aquatec tiles.



KNAUFINSULATION

Knauf Insulation Pty. Ltd.

Knauf Insulation supplies a wide range of high performance glasswool, XPS (extruded polystyrene) and blow-in insulation in Australia.

As a leading insulation manufacturer, Knauf Insulation utilises state-of-the-art proprietary technology and has set a new benchmark around the world for premium quality, sustainable insulation products.



Heradesign

The Heradesign range is made from sustainable PEFC-certified timber, pure magnesite and water. Heradesign wood wool lining is a natural acoustic performer offering unlimited design flexibility.

Heradesign is highly durable and is available in a number of surface finishes. It is flame and termite resistant and free from emissions.



Decorative Ceiling Linings

SpanGrid

SpanGrid are plasterboard ceiling tiles that can be used as demountable in-fill panels in suspended ceilings and that require no further finishing treatment.

Standard	Protech	Cleancare [^]
<ul style="list-style-type: none"> ➤ Paper faced ➤ Economical ➤ Easy to install 	<ul style="list-style-type: none"> ➤ Laminated with durable and PVC free laminate ➤ Scratch resistant ➤ Easy to install and clean 	<ul style="list-style-type: none"> ➤ Laminated with antibacterial vinyl laminate ➤ Resists mould growth ➤ Durable hygiene control surface ➤ Easy to install and clean

Thickness (mm)	Width (mm)	Length (mm)	Weight* (kg/m ²)	SpanGrid	SpanGrid Protech	SpanGrid Cleancare [^]
10	600	1200	7.3	•	•	•



[^] Non stock item - lead times and minimum order quantities may apply

Cornice



ClassicLook

- Simple curved profile
- Clean finish
- Suit all decors



Profile (mm)	Length (mm)
55, 75, 90	3000 – 5400



SwanLook

- Appealing easy flowing profile
- Adds a smooth, graceful style



Profile (mm)	Length (mm)
75	4800



WaveLook

- Elegant soft curved profile
- Adds a smooth and relaxing style



Profile (mm)	Length (mm)
75	4200



PacificLook

- Bold curves and smooth profile
- Can be retrofitted over existing 55mm cornice



Profile (mm)	Length (mm)
90	4200



StepLook

- Contemporary 2, 3 and 4 step profile
- Adds depth, edge and dimension



Profile (mm)	Length (mm)
50 (StepLook 2) 75 (StepLook 3) 100 (StepLook 4)	4200



SkyLook

- Sharp lines and clean profile
- Can be retrofitted over existing 55mm cornice



Profile (mm)	Length (mm)
90	4200

Compounds

BEDDING CEMENTS

MastaBase

MastaBase is a plaster based cement for bedding tape and second coating all plasterboard joints. It has a setting time of 60 minutes.

- High joint strength
- Easy to scrape back
- Quick drying

10 kg bag
20 kg bag



MastaLongset

MastaLongset is a plaster based cement for bedding tape and second coating all plasterboard joints. It has an extended setting time of 80 minutes, making it ideal for mechanical tools.

- Free flowing
- Smooth edges
- Easy to retrowel

20 kg bag



MastaTape Universal

MastaTape Universal is a ready to use air drying compound for bedding tape into recessed edges and butt joints for plasterboard systems. It is also suitable for second coating joints, for internal and external angles as well as fastener heads. MastaTape is ideal for use with mechanical taping and setting tools, minimising time spent cleaning and mixing.

MastaTape Universal is the compound of choice for the UltraHome System. For best results use MastaTape Universal for first, second and final coat.

- Fast application
- Strong tape bond
- Level+ Technology for premium finish

16 kg bucket



FINISHING COMPOUNDS

MastaFinish

MastaFinish is a premium jointing compound designed for the finishing coat over plasterboard joints. MastaFinish is premixed and ready to use.

- Superior finish
- Easy to trowel
- Easy to sand

20 kg bucket



MastaGlide

MastaGlide is a good value heavy weight compound for final coating plasterboard joints.

- Smooth trowelling
- Great sanding
- Low shrinkage

20 kg bucket



JOINTING COMPOUNDS

MastaLite

MastaLite is a premixed all purpose jointing compound that is suitable for bedding tape, second and final coating of plasterboard joints.

- Good body
- Ideal for electric sanding
- Free flowing

17 kg bucket



MastaCoat3

MastaCoat3 is an all purpose jointing compound suitable for bedding tape, second and final coating plasterboard joints. It is ideal for smaller jobs and renovations.

- Premixed for easy use
- Easy to clean off
- Minimal wastage

4 kg bucket



MastaLine

MastaLine is a premixed jointing compound formulated to perform in all phases of jointing, coating trim and fasteners and final coating. MastaLine can also be applied as a final coat over MastaBase, MastaLongset or MastaTape.

- All purpose
- Premixed for easy use

23.4 kg bucket



Uniflott

Uniflott is a plaster based cement specifically developed for filling joints of Stratopanel systems.

- Low shrinkage
- High jointing strength

5 kg bag



SPECIALITY COMPOUNDS

MastaBlock

MastaBlock is a pink plaster based setting cement designed specifically for back-blocking ceiling joints in accordance with Australian Standard 2589.1. MastaBlock has a working time of 3.5 hours.

- Strengthens joints
- Minimises joint cracking
- Long setting time

20 kg bag



MastaFix20

MastaFix20 is a versatile 3-in-1 cement with a setting time of 20 minutes. Ideal for patching and fixing cornice, MastaFix20 also performs well as a bedding cement.

- For patching, corning and jointing
- Sets quickly
- Easy to work with

10 kg bag



CORNICE CEMENTS

MastaSmooth

MastaSmooth is a super fine white plaster based cornice cement. It is perfect for installing both cornice and decorative features.

- Quick initial grab
- Superior bond strength
- Sets to a brilliant white finish

20 kg bag



MastaCove45

MastaCove45 is a plaster based cornice cement. With a setting time of 45 minutes, it is ideal for all corning applications.

- Mixes easily to a creamy gauge
- Goes off evenly
- Excellent workback

20 kg bag



MastaCove75

MastaCove75 is a plaster based cornice cement. With a setting time of 75 minutes, it is suitable for large corning jobs.

- Mixes easily to a creamy gauge
- Stabilised set
- Extended working time

20 kg bag



ADHESIVES

MastaBond

MastaBond is a yellow bonding cement for adhering plasterboard to masonry surfaces.

- Excellent grab
- Easy to mix
- Easy to apply

20 kg bag



MastaGrip

MastaGrip is an acrylic stud adhesive for adhering plasterboard to timber and metal frames in conjunction with screws or nails.

- Sticks to treated timbers
- Complies with Australian Standard 2753-1985
- Fast tack

600 ml foil tube

1.25 kg bucket

5.2 kg bucket



SEALANTS

BindEx Fire and Acoustic Sealant

BindEx Fire and Acoustic Sealant is an acrylic based sealant designed to stop sound, smoke and fire from passing through gaps in fire rated walls. It has been fire tested in Australia for control joints, perimeter seals and penetration seals around cables and metal pipes.

- Can be used instead of MastaBase and paper tape to joint sheets in multi-layer wall systems
- Excellent slump resistance
- Easy to apply and tool off

600 ml foil tube

310 ml cartridge



PRIMERS

BindEx High Absorption Primer

BindEx High Absorption Primer is a ready-to-use synthetic emulsion for priming PERMAROCK® Cement Board Indoor.

- › Easy and fast application
- › Solvent free and alkali resistant

15 kg bucket



BindEx Penetration Primer

BindEx Penetration Primer is suitable for priming substrates such as plasterboard and gypsum plasters before the application of jointing and levelling compounds, paint, wallpaper and tile adhesives.

- › Regulates surface absorption and strengthens compound adhesion
- › Ready mixed and easy to apply
- › Solvent-free and open to vapour diffusion

10 L bucket



Accessories

MastaMate Paper Tape

MastaMate Paper Tape is a spark perforated paper tape for bedding into the first coat of plasterboard joints. MastaMate Paper Tape is the quality choice and will result in the strongest plasterboard joint when used with MastaBase or MastaLongset.

- › Machine roughened for superior bonding
- › Centre creased for easy application
- › Spark perforated to prevent blistering

75m roll



IF YOU WOULD LIKE TO KNOW MORE
about the products we offer, our online tools and
technical advice, go to one of our websites -
**Knauf Plasterboard, Knauf Metal,
PlastaMasta or Sound of Architecture**

or call our customer service teams
Knauf Plasterboard - 1300 724 505
Knauf Metal - 1300 725 675





Knauf Plasterboard Pty Ltd

ABN 61 003 621 010

31 Military Road

Matraville NSW 2036

Customer Service 1300 724 505

knaufplasterboard.com.au

Knauf Metal

ABN 61 003 621 010

Cnr Quindus St & Spanns Rd

Beenleigh QLD 4207

Customer Service 1300 725 675

knaufmetal.com.au